

## LOUDON COUNTY COMMISSION WORKSHOP

Monday, May 20, 2013

County Office Building

6:00 pm

1. **This is the time for audience members to speak on items on or not on the Agenda.**
  
2. **Loudon County Planning and Codes Director, Russ Newman**
  - A. A Resolution Amending the Zoning Map of Loudon County, Tennessee, Pursuant To Chapter Seven, §13-7-105 of the Tennessee Code Annotated, To Rezone Approximately 2.0 Acres From A-2 (Rural Residential District) to R-1 (Suburban Residential District), referenced by Tax Map 25K, parcels 22.00, 23.00, 24.00 and 25.00, Located on Loudon Ridge Road at the Intersection with Snodderly Drive, 5<sup>th</sup> Legislative District.
  
  - B. A Resolution Amending the Zoning Map of Loudon County, Tennessee, Pursuant to Chapter Seven, §13-7-105 of the Tennessee Code Annotated, To Rezone Approximately 7.65 Acres From R-1 (Suburban Residential District) To O-1 (Office Professional District), referenced by Tax Map 11, Parcel 37.00, Located at 16746 Highway 11 East, 5<sup>th</sup> Legislative District.
  
3. **Loudon County Mayor, Estelle Herron**
  - A. Consideration of Appointments to the Following Boards/Committees:
    1. Beer Board
    2. Board of Zoning Appeals
    3. Regional Planning Commission
    4. Roane State Maintenance and Operations Advisory Committee
    5. TASS Board of Directors
    6. TCCA Legislative Committee
  
4. **Loudon County Budget Director, Tracy Blair**
  - A. Budget Committee Recommendations
  
5. **Any other items**
  
6. **Adjournment**

RESOLUTION

A RESOLUTION AMENDING THE ZONING MAP OF LOUDON COUNTY, TENNESSEE, PURSUANT TO CHAPTER SEVEN, §13-7-105 OF THE TENNESSEE CODE ANNOTATED, TO REZONE APPROXIMATELY 2.0 ACRES FROM A-2 (RURAL RESIDENTIAL DISTRICT) TO R-1 (SUBURBAN RESIDENTIAL DISTRICT), referenced by, TAX MAP 25K, PARCELS 22.00, 23.00, 24.00 AND 25.00, LOCATED ON LOUDON RIDGE ROAD AT THE INTERSECTION WITH SNODDERLY DRIVE, 5<sup>th</sup> Legislative District.

WHEREAS, the Loudon County Commission, in accordance with Chapter Seven, §13-7-105 of the Tennessee Code Annotated, may from time to time, amend the number, shape, boundary, area or any regulation of or within district or districts, or any other provision of any zoning resolution, and

WHEREAS, the Regional Planning Commission has forwarded a recommendation regarding the amendment to the Zoning Map of Loudon County, Tennessee,

WHEREAS, a notice of public hearing and a description of the resolution appeared in the Loudon County News Herald on April 21/22, 2013 consistent with provisions of Tennessee Code Annotated, §13-7-105, and

NOW, THEREFORE, BE IT RESOLVED by the Loudon County Commission that the Zoning Map of Loudon County, Tennessee be amended as follows:

Located on Loudon Ridge Road at Snodderly Drive, situated in the 5<sup>th</sup> Legislative District, referenced on Tax Map 25K, Parcels 22.00, 23.00, 24.00 and 25.00 be rezoned from A-2 (Rural Residential District) to R-1 (Suburban Residential District) as shown on the attached map, said map being a part of this Resolution.

BE IT FINALLY RESOLVED, that this Resolution shall take effect immediately, the public welfare requiring it.

\_\_\_\_\_  
ATTEST

\_\_\_\_\_  
LOUDON COUNTY CHAIRMAN

DATE: \_\_\_\_\_

\_\_\_\_\_  
APPROVED: LOUDON COUNTY MAYOR

The votes on the question of approval of this Resolution by Planning Commission are as follows:

APPROVED: 10-0

DISAPPROVED: \_\_\_\_\_

Pamela G. McNew   
\_\_\_\_\_

ATTEST: SECRETARY LOUDON COUNTY REGIONAL PLANNING COMMISSION

DATE: APRIL 16, 2013

FILE # 13-13-19-RZ-CO



RESOLUTION

A RESOLUTION AMENDING THE ZONING MAP OF LOUDON COUNTY, TENNESSEE, PURSUANT TO CHAPTER SEVEN, §13-7-105 OF THE TENNESSEE CODE ANNOTATED, TO REZONE APPROXIMATELY 7.65 ACRES FROM R-1 (SUBURBAN RESIDENTIAL DISTRICT) TO O-1 (OFFICE PROFESSIONAL DISTRICT), referenced by, TAX MAP 11, PARCEL 37.00, LOCATED AT 16746 HIGHWAY 11 EAST, 5<sup>TH</sup> LEGISLATIVE DISTRICT.

WHEREAS, the Loudon County Commission, in accordance with Chapter Seven, §13-7-105 of the Tennessee Code Annotated, may from time to time, amend the number, shape, boundary, area or any regulation of or within district or districts, or any other provision of any zoning resolution, and

WHEREAS, the Regional Planning Commission has forwarded a recommendation regarding the amendment to the Zoning Map of Loudon County, Tennessee,

WHEREAS, a notice of public hearing and a description of the resolution appeared in the Loudon County News Herald on April 21/22, 2013 consistent with provisions of Tennessee Code Annotated, §13-7-105, and

NOW, THEREFORE, BE IT RESOLVED by the Loudon County Commission that the Zoning Map of Loudon County, Tennessee be amended as follows:

Located at 16746 Highway 11 East, situated in the 5<sup>th</sup> Legislative District, referenced on Tax Map 11, Parcel 37.00 be rezoned from R-1 (Suburban Residential District) to O-1 (Office Professional District) as shown on the attached map, said map being part of this Resolution.

BE IT FINALLY RESOLVED, that this Resolution Shall take effect immediately, the public welfare requiring it.

\_\_\_\_\_  
ATTEST

\_\_\_\_\_  
LOUDON COUNTY CHAIRMAN

DATE: \_\_\_\_\_

\_\_\_\_\_  
APPROVED: LOUDON COUNTY MAYOR

The votes on the question of approval of this Resolution by Planning Commission are as follows:

APPROVED: \_\_\_\_\_

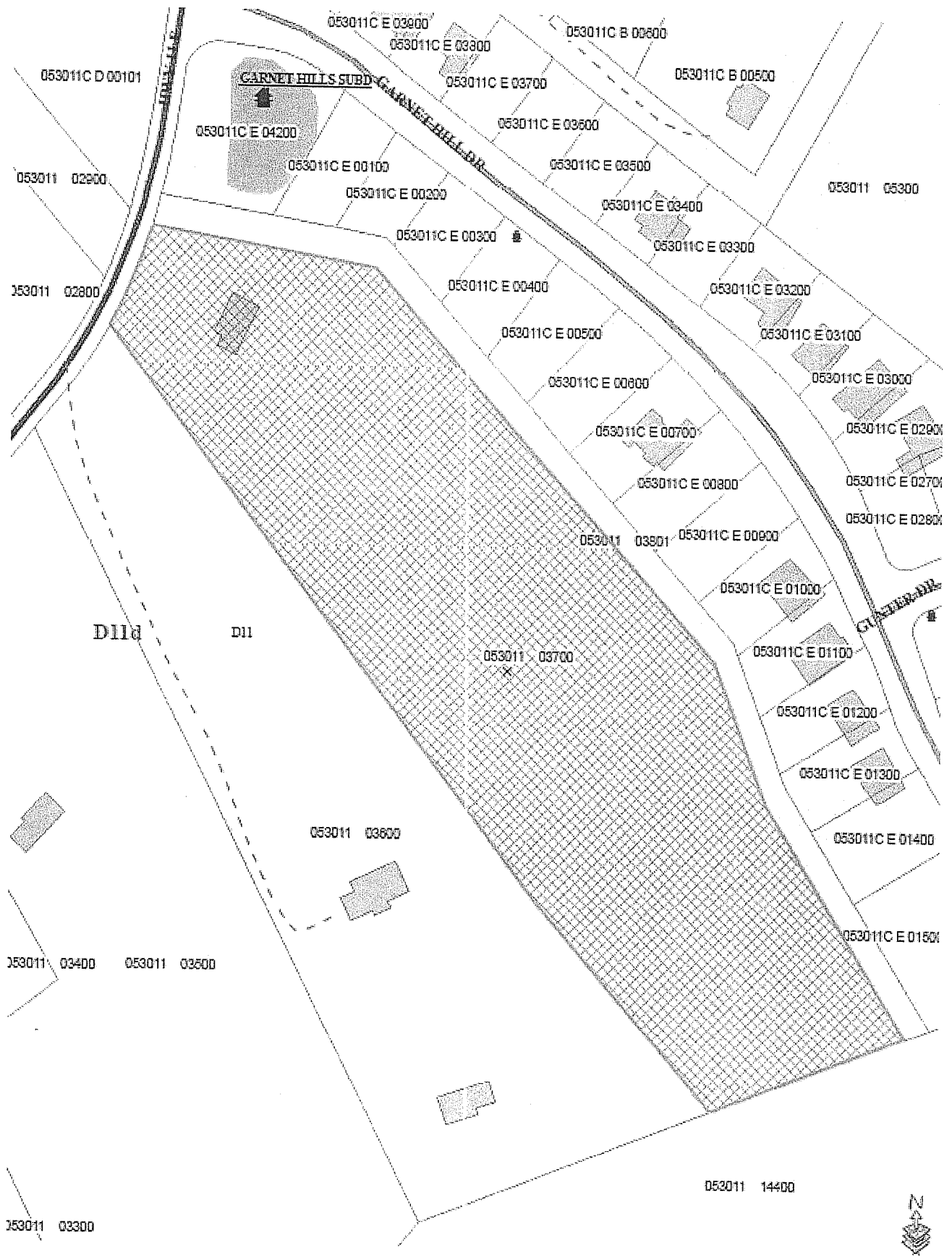
DISAPPROVED: 10-0

*Penelope G. McNew*  
\_\_\_\_\_

ATTEST: SECRETARY LOUDON COUNTY REGIONAL PLANNING COMMISSION

DATE: APRIL 16, 2013

FILE # 13-03-17-RZ-CO



**LOUDON COUNTY COMMISSION**  
**RESOLUTION 060313-**

**RESOLUTION APPROVING OR ACKNOWLEDGING BOARD OR**  
**COMMITTEE APPOINTMENT BY COUNTY MAYOR**

*WHEREAS*, by statute, and/or intergovernmental agreement and/or County Procedural Regulations, the County Mayor has authority to make certain committee and board appointments; and

*WHEREAS*, an appointment (or appointments) is necessary and/or desirable at this time with a three (3) year Staggered Term and

*WHEREAS*, the County Mayor appoints the following as a member of

**LOUDON COUNTY**  
**BEER BOARD**

<u>Appointee</u>	<u>Term Expiration</u>
<b><u>Panel B</u></b> Fourth District – Jeff Marlow	August 31, 2014

*NOW, THEREFORE, BE IT RESOLVED* that the Loudon County Commission, meeting in regular session assembled this 3rd day of June, 2013 hereby approves and acknowledges (as appropriate), the said appointment(s).

\_\_\_\_\_  
COUNTY CHAIRMAN

ATTEST:

\_\_\_\_\_  
COUNTY CLERK

\_\_\_\_\_  
COUNTY MAYOR

The remaining members and their continuing expiration terms for said board or committee are as follows:

<b><u>Panel C</u></b> Fifth District – Jerry Park	August 31, 2015
Sixth District – Krystee Ervin Conaway	August 31, 2015
Seventh District – Bob Snodgrass	August 31, 2015

<b><u>Panel B</u></b> Third District – Jim Brooks	August 31, 2014
--	-----------------

<b><u>Panel A</u></b> First District – John Lovelace	August 31, 2013
Second District – Connie Sledzinski	August 31, 2013

**LOUDON COUNTY COMMISSION**

**RESOLUTION 060313**

**RESOLUTION APPROVING OR ACKNOWLEDGING BOARD OR  
COMMITTEE APPOINTMENT BY COUNTY MAYOR**

*WHEREAS*, by statute, and/or intergovernmental agreement and/or County Procedural Regulations, the County Mayor has authority to make certain committee and board appointments; and

*WHEREAS*, an appointment is necessary and desirable at this time; and

*WHEREAS*, the County Mayor appoints the following as a member of

**LOUDON COUNTY  
REGIONAL PLANNING COMMISSION**

<u>Appointee</u>	<u>Term Expiration</u>
<b>Jimmy Brooks (3rd District)</b>	<b>June 30, 2017</b>
<b>Martin Brown (5<sup>th</sup> District – Slot B)</b>	<b>June 30, 2017</b>

*NOW, THEREFORE, BE IT RESOLVED* that the County Commission meeting in regular session assembled this 3rd day of June, 2013 hereby approves and acknowledges (as appropriate), the said appointment.

\_\_\_\_\_  
COUNTY CHAIRMAN

ATTEST:

\_\_\_\_\_  
COUNTY CLERK

\_\_\_\_\_  
COUNTY MAYOR

The remaining members and their continuing expiration terms for said board or committee are as follows:

<u>Appointee</u>	<u>Term Expiration</u>
<b>John Napier (1<sup>st</sup> District – Slot B)</b>	<b>June 30, 2014</b>
<b>Janice Terry (2<sup>nd</sup> District – Slot A)</b>	<b>June 30, 2014</b>
<b>Ryan Bright (4<sup>th</sup> District)</b>	<b>June 30, 2014</b>
<b>Barbara J. Cardwell (2<sup>nd</sup> District – Slot B)</b>	<b>June 30, 2015</b>
<b>Harold Luttrell (6<sup>th</sup> District)</b>	<b>June 30, 2015</b>
<b>Pam McNew (1<sup>st</sup> District – Slot A)</b>	<b>June 30, 2016</b>
<b>Roger Hale (5<sup>th</sup> District – Slot A)</b>	<b>June 30, 2016</b>
<b>Carlie McEachern (LRPC)</b>	<b>Co-term</b>
<b>Monty Ross (LPC)</b>	<b>Co-term</b>

**LOUDON COUNTY COMMISSION**

**RESOLUTION 060313**

**RESOLUTION APPROVING OR ACKNOWLEDGING BOARD OR  
COMMITTEE APPOINTMENT BY COUNTY MAYOR**

*WHEREAS*, by statute, and/or intergovernmental agreement and/or County Procedural Regulations, the County Mayor has authority to make certain committee and board appointments; and

*WHEREAS*, appointments are necessary and/or desirable at this time; and

*WHEREAS*, the County Mayor appoints the following as members of the

**ROANE STATE MAINTENANCE AND  
OPERATION ADVISORY COMMITTEE**

<b><u>Appointee</u></b>	<b><u>Term Expiration</u></b>
Tony Aikens (City of Lenoir City)	June 30, 2014
Commissioner Harold Duff	June 30, 2014
Mayor Estelle Herron	June 30, 2014

*NOW, THEREFORE, BE IT RESOLVED* that the Loudon County Commission, meeting in regular session assembled this 3rd of June, 2013 hereby approves or acknowledges (as appropriate), the said appointments.

\_\_\_\_\_  
COUNTY CHAIRMAN

ATTEST:

\_\_\_\_\_  
COUNTY CLERK

\_\_\_\_\_  
COUNTY MAYOR

The remaining members and their continuing expiration terms for said board or committee are as follows:

<b><u>Appointee</u></b>	<b><u>Term Expiration</u></b>
Susan Williams (Roane State)	



**LOUDON COUNTY COMMISSION**

**RESOLUTION 060313-**

**RESOLUTION APPROVING OR ACKNOWLEDGING BOARD OR  
COMMITTEE APPOINTMENT BY COUNTY MAYOR**

*WHEREAS*, by statute, and/or intergovernmental agreement and/or County Procedural Regulations, the County Mayor has authority to make certain committee and board appointments; and

*WHEREAS*, an appointment is necessary and desirable at this time; and

*WHEREAS*, the County Mayor appoints the following as a member of

**TCCA LEGISLATIVE COMMITTEE**

<u>Appointee</u>	<u>Term Expiration</u>
Commission Harold Duff	June 30, 2014

*NOW, THEREFORE, BE IT RESOLVED* that the County Commission in regular session assembled this 3rd day of June 2013 hereby approves and acknowledges (as appropriate), the said appointment.

\_\_\_\_\_  
COUNTY CHAIRMAN

ATTEST:

\_\_\_\_\_  
COUNTY CLERK

\_\_\_\_\_  
COUNTY MAYOR

The remaining members and their continuing expiration terms for said board or committee are as follows:

<u>Appointee</u>	<u>Term Expiration</u>
------------------	------------------------

**LOUDON COUNTY COMMISSION**

**RESOLUTION 060313-**

**RESOLUTION APPROVING OR ACKNOWLEDGING BOARD OR  
COMMITTEE APPOINTMENT BY COUNTY MAYOR**

*WHEREAS*, by statute, and/or intergovernmental agreement and/or County Procedural Regulations, the County Mayor has authority to make certain committee and board appointments; and

*WHEREAS*, an appointment is necessary and desirable at this time; and

*WHEREAS*, the County Mayor appoints the following as a member of

**TELLICO AREA SERVICE SYSTEM**

Appointee  
Kenneth Dutton

Term Expiration  
June 30, 2016

*NOW, THEREFORE, BE IT RESOLVED* that the County Commission in regular session assembled this 3<sup>rd</sup> day of June 2013 hereby approves and acknowledges (as appropriate), the said appointment.

\_\_\_\_\_  
COUNTY CHAIRMAN

ATTEST:

\_\_\_\_\_  
COUNTY CLERK

\_\_\_\_\_  
COUNTY MAYOR

The remaining members and their continuing expiration terms for said board or committee are as follows:

Appointee  
Roy Goddard  
James Brooks

Term Expiration  
June 30, 2014  
June 30, 2015

**LOUDON COUNTY COMMISSION**

**RESOLUTION 060313**

**RESOLUTION APPROVING OR ACKNOWLEDGING BOARD OR  
COMMITTEE APPOINTMENT BY COUNTY MAYOR**

*WHEREAS*, by statute, and/or intergovernmental agreement and/or County Procedural Regulations, the County Mayor has authority to make certain committee and board appointments; and

*WHEREAS*, an appointment is necessary and desirable at this time; and

*WHEREAS*, the County Mayor appoints the following as a member of

**LOUDON COUNTY  
BOARD OF ZONING APPEALS**

Appointee

**Carlie McEachern (1<sup>st</sup> District)**

**Janice Terry (2<sup>nd</sup> District)**

Term Expiration

**June 30, 2015**

**June 30, 2015**

*NOW, THEREFORE, BE IT RESOLVED* that the County Commission meeting in regular session assembled this 3rd day of June, 2013 hereby approves and acknowledges (as appropriate), the said appointment.

\_\_\_\_\_  
COUNTY CHAIRMAN

ATTEST:

\_\_\_\_\_  
COUNTY CLERK

\_\_\_\_\_  
COUNTY MAYOR

The remaining members and their continuing expiration terms for said board or committee are as follows:

Appointee

**Ryan Bright (4<sup>th</sup> District)**

**Martin Brown (5<sup>th</sup> District)**

**Howard Luttrell (6th District)**

Term Expiration

**June 30, 2014**

**June 30, 2014**

**June 30, 2014**